



[www.cir-srl.com](http://www.cir-srl.com)

**Cinema**

**General Catalogue**

**2010/2011**

Distributed Worldwide by



## ***Film Splicers***

### ***Splicers for film Before Processing (Adhesive Tape)***

- **M.3-16mm Darkroom** (INC82/b)
- **M.3-35mm Darkroom** (INC82/a)

### ***Splicers for Negative Film (Adhesive Tape)***

- **M.3-35mm Negative Special** (INC34)
- **M.3-35mm Neg./2Frames Special** (INC44/a)

### ***Splicers for Projection & Editing (Adhesive Tape)***

- **M.3-16mm Special** (INC47/B-SCM)
- **M.3-16mm 2T Special** (INC47/A-SCM)
- **M.3-16mm 2T Double Perf.Special** (INC48)
- **M.3-17,5mm** (INC15)
- **M.3-35 mm Special** (INC51/B-SCM)
- **M.3-35mm 2T Special** (INC51/A-SCM)
- **M.3-35mm Pos/2Frames Special** (INC44/b)
- **M.3-35mm Cinemascope Special** (INC19)
- **M.3-70/65mm Special** (INC20)

### ***Splicers for archive/video-transfer/special formats***

- **M.3-35mm Pos/2Frames Special** (INC44/b)
- **M.3-16mm Special** (INC47/B-SCM)
- **M3-35mm Archive** (INC56)
- **M.3-35mm Neg./2FramesSpecial** (INC44/a)
- **9,5mm Pathè** (INC2)
- **8mm** (INC1)
- **Super 8** (INC3)
- **MAC2-35mm Cement Negative** (CINE 1) **NEW Available for 16mm, 9,5mm,8mm, Super8.**

### ***Special Film-Splicing-Tapes***

- **SPC pre-splicing adhesive tapes**
- **Editing adhesive tapes**

## Splicers for film before processing (adesive tape)



### M.3-16mm Darkroom (INC82/b)

Cuts the adhesive tape for an extremely resistant wraparound splice on 16mm film.

Special for darkroom use, to splice film before continuous processing.

- Central stop pin for easy film positioning before tape application in the darkroom.
- Hold down clamps to keep fixed film ends during tape application.
- Anti-skid plate with rubber foot mounting to keep the splicer stationary. We recommend to use a proper splicing tape like our chemical-resistant CIR (*NAS12A 25mmx20mt Tape Black/Pre*)



### M.3-35mm Darkroom (INC82/a)

Cuts the adhesive tape for an extremely resistant wraparound splice on 35mm film.

Special for darkroom use, to splice film before continuous processing.

- Central stop pin for easy film positioning before tape application in the darkroom.
- Hold down clamps to keep fixed film ends during tape application.
- Anti-skid plate with rubber foot mounting to keep the splicer stationary.
- We recommend to use a proper splicing tape like our chemical-resistant CIR (*NAS12A 25mmx20mt Tape Black/Pre*)

## Splicers for negative film (adesive tape)



### M.3-35mm Negative Special (INC34)

Perforates and cuts the adhesive tape to join 35mm film with negative perforation.

- Micrometrical registration pins regulator to obtain always perfect butt splices also with old and retired film.
- Spring-loaded knife, always ready for the next cut.
- Anti-skid plate with rubber foot mounting to keep the splicer stationary and to collect the punched-out tape rectangles.
- For a better result in time we recommend to use a proper splicing tape like our CIR (*NAS8 25mmx10mt Tape Clear Edit*).



### M.3-35mm Neg./2FramesSpecial (INC44/a)

Perforates and cuts a special 38mm wide adhesive tape which covers exactly 2 frames of 35 mm film with negative perforation.

- Micrometrical registration pins regulator to obtain always perfect butt splices also with old and retired film.
- Spring-loaded knife, always ready for the next cut.
- Anti-skid plate with rubber foot mounting to keep the splicer stationary and to collect the punched-out tape rectangles.
- For a better result in time we recommend to use a proper splicing tape like our CIR (*NAS9B 38mmx10mt Tape Clear Edit*).

## Splicers for projection & editing



### M.3-16mm Special (INC47/B-SCM)

Perforates and cuts the adhesive tape to join 16 mm film.

- Micrometrical registration pins regulator to obtain always perfect butt splices also with old and retired film.
- Retractable pins for splicing of non-standard pitched film.
- Film-hold-down-springs for curled film.
- Guide lines for tape application.
- Spring-loaded knife, always ready for the next cut.
- Anti-skid plate with rubber foot mounting to keep the splicer stationary and to collect the punched-out tape rectangles.
- For a better result in time we recommend to use a proper splicing tape like our CIR (*NAS2 15mmx10mt Tape Clear Edit*)



**Available with additional diagonal cutter for magnetic tape:**

### (M.3-16mm 2T Special (INC47/A-SCM))

For a better result in time we recommend to use a proper splicing tape like our CIR (*NAS2 15mmx10mt Tape Clear Edit*)



### M.3-16mm 2T Double Perf. Special (INC48)

Perforates and cuts the adhesive tape to join 16 mm film and magnetic tape with double perforations.

- Micrometrical registration pins regulator to obtain always perfect butt splices also with old and retired film.
- Alternating pins for single frame magnetic tape cut and retractable pins for splicing of non-standard film.
- Film-hold-down-springs for curled film.
- Guide lines for tape application.
- Spring-loaded knives, always ready for the next cut.
- Anti-skid plate with rubber foot mounting to keep the splicer stationary and to collect the punched-out tape rectangles.
- For a better result in time we recommend to use a proper splicing tape like our CIR (*NAS2 15mmx10mt Tape Clear Edit*)



### M.3-17,5mm (INC15)

Perforates and cuts the adhesive tape to join 17,5 mm magnetic tape.

- Auxiliary guide channel to allow the cut of even 1 only perforation from the end of magnetic tape during editing and synchronizing operations.
- Magnetic tape diagonal cutter.
- For a better result in time we recommend to use a proper splicing tape like our (*CIR (NAS2 15mmx10mt Tape Clear Edit)*)



### **M.3-35 mm Special (INC51/B-SCM)**

Perforates and cuts the adhesive tape to join 35mm film.

- Micrometrical registration pins regulator to obtain always perfect butt splices also with old and retired film.
- Spring-loaded knife, always ready for the next cut.
- Anti-skid plate with rubber foot mounting to keep the splicer stationary and to collect the punched-out tape rectangles.
- For a better result in time we recommend to use a proper splicing tape like our CIR (*NAS8 25mmx10mt Tape Clear Edit*).



**Available with additional diagonal cutter for magnetic tape:**

### **(M.3-35mm 2T Special (INC51/A-SCM))**

For a better result in time we recommend to use a proper splicing tape like our CIR (*NAS8 25mmx10mt Tape Clear Edit*).



### **M.3-35mm Pos/2Frames Special (INC44/b)**

Perforates and cuts a special 38mm wide adhesive tape which covers exactly 2 frames of 35 mm film with positive perforation.

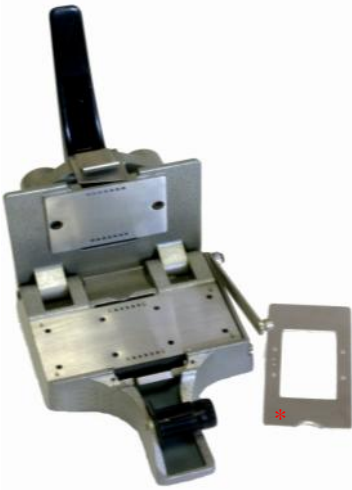
- Micrometrical registration pins regulator to obtain always perfect butt splices also with old and retired film.
- Spring-loaded knife, always ready for the next cut.
- Anti-skid plate with rubber foot mounting to keep the splicer stationary and to collect the punched-out tape rectangles.
- For a better result in time we recommend to use a proper splicing tape like our CIR (*NAS9B 38mmx10mt Tape Clear Edit*).



### **M.3-35mm Cinemascope Special (INC19)**

Perforates and cuts the adhesive tape to join 35 mm film with cinemascope perforation.

- Micrometrical registration pins regulator to obtain always perfect butt splices also with old and retired film.
- Spring-loaded knife, always ready for the next cut.
- Anti-skid plate with rubber foot mounting to keep the splicer stationary and to collect the punched-out tape rectangles.
- For a better result in time we recommend to use a proper splicing tape like our CIR (*NAS8 25mmx10mt Tape Clear Edit*).



### **M.3-70/65mm Special (INC20)**

Perforates and cuts the adhesive tape to join 65mm negative film as well as all 70mm positive film "cinema". Equipped with side film cutter to exactly cut on frameline between the film perforation holes.

- \*On request the special mask & cutter to apply the adhesive tape on back of film without covering the eventual sound tracks.
- For a better result we recommend to use a proper splicing tape like ours:  
 CIR NAS8 25mm x 10 Clear Edit Tape (for Positive film).  
 CIR NAS10 8,5mm x10mt Clear Edit Tape (for Negative film).  
 CIR NAS12A 25mm x 20 BLACK SPC (for Negative before processing).

## **Splicers for archive/video-transfer/special formats**



### **M.3-35mm Pos/2Frames Special (INC44/b)**

Perforates and cuts a special 38mm wide adhesive tape which covers exactly 2 frames of 35 mm film with positive perforation.

- Micrometrical registration pins regulator to obtain always perfect butt splices also with old and retired film.
- Spring-loaded knife, always ready for the next cut.
- Anti-skid plate with rubber foot mounting to keep the splicer stationary and to collect the punched-out tape rectangles.
- For a better result in time we recommend to use a proper splicing tape like our CIR (*NAS9B 38mmx10mt Tape Clear Edit*).



### **M.3-16mm Special (INC47/B-SCM)**

Perforates and cuts the adhesive tape to join 16 mm film.

- Micrometrical registration pins regulator to obtain always perfect butt splices also with old and retired film.
- Retractable pins for splicing of non-standard pitched film.
- Film-hold-down-springs for curled film.
- Guide lines for tape application.
- Spring-loaded knife, always ready for the next cut.
- Anti-skid plate with rubber foot mounting to keep the splicer stationary and to collect the punched-out tape rectangles.
- For a better result in time we recommend to use a proper splicing tape like our CIR (*NAS2 15mmx10mt Tape Clear Edit*)



### **M3-35mm Archive (INC56)**

Especially designed for splice-reinforcements and short perforation repairs on old 35mm archive film (negative/positive).

- Re-make dried-out, damaged or half detached splices due to ageing, which would not pass through re-printing or telecine.
- To reinforce or repair damaged perforations due to ageing, which could not be repaired with the normal pre perforated adhesive tape without alternating the film pitch.
- Always performing perfectly butt well-aligned splices, even when film is remarkably shrunk.
- For better results in time we recommend to use a proper splicing tape like our CIR (*NAS12A SPC 25mmx20mt Tape Black/Pre or NAS9B 38mmx10mt Tape Clear Edit*)



**A sample of splice reinforcement and perforation repair.**



### **M.3-35mm Neg./2FramesSpecial (INC44/a)**

Perforates and cuts a special 38mm wide adhesive tape which covers exactly 2 frames of 35 mm film with negative perforation.

- Micrometrical registration pins regulator to obtain always perfect butt splices also with old and retired film.
- Spring-loaded knife, always ready for the next cut.
- Anti-skid plate with rubber foot mounting to keep the splicer stationary and to collect the punched-out tape rectangles.
- For a better result in time we recommend to use a proper splicing tape like our CIR (*NAS9B 38mmx10mt Tape Clear Edit*).

### **9,5mm Pathè (INC2)**

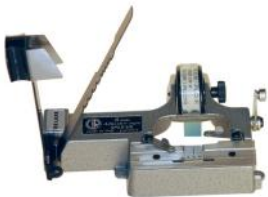
Perforates and cuts the adhesive tape to join 9,5 Pathe' film in one single action with a wraparound splice.



- Completes range of CIR splicers for all amateur film formats (8, Super 8, 16 and 9,5).
- Metal casting with cutting parts in stainless anti-magnetic steel.
- Possibility to splice old and retired film.
- Particularly indicated for film archives to reinforce or remake splices on old film without losing a single frame.
- For a better result in time we recommend to use a proper splicing tape like our CIR (*NAS11 13,8mmx10mt Tape Clear Edit*).

### **8mm (INC1)**

Perforates and cuts the adhesive tape to join 8mm film in one single action with a wraparound splice, leaving the sound track free.



- Completes range of CIR splicers for all amateur film formats (8, Super 8, 16 and 9,5).
- Metal casting with cutting parts in stainless anti-magnetic steel.
- Possibility to splice old and retired film.
- Particularly indicated for film archives to reinforce or remake splices on old film without losing a single frame.
- For a better result in time we recommend to use a proper splicing tape like our CIR (*NAS13 12mmx10mt Tape Clear Edit*)

### **Super 8 (INC3)**

Perforates and cuts the adhesive tape to join super 8mm film in one single action with a wraparound splice.



- Completes range of CIR splicers for all amateur film formats (8, Super 8, 16 and 9,5).
- Plastic base with cutting parts in stainless anti-magnetic steel.
- Possibility to splice old and retired film.
- Particularly indicated for film archives to reinforce or remake splices on old film without losing a single frame.
- For a better result in time we recommend to use a proper splicing tape like our CIR (*NAS10 8,5mmx10mt Tape Clear Edit*)

**New**

## MAC2 35mm Cement Splicer



Mac2 35mm

MAC2 35mm Splicer is especially designed for splicing all types of 35mm film and repairing any splice, even on very old library shots.

It resolves the film pitch and/or width variation problems also arising with ageing acetate or nitrate film.

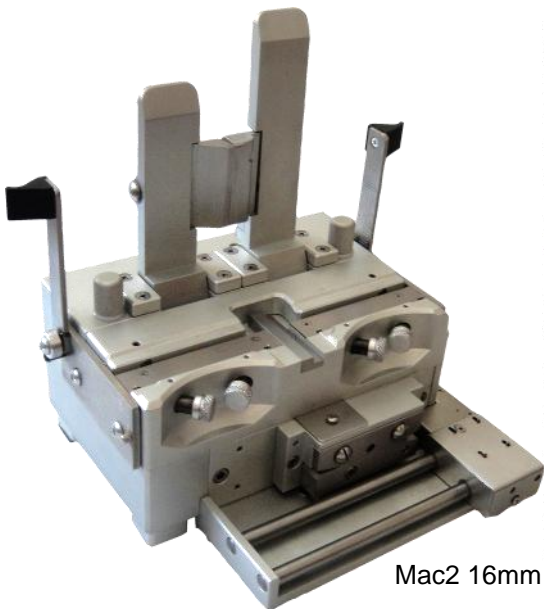
Thanks to a series of well-engineered matrix regulations it works perfectly with in-pitch and well aligned splices and also enables you to renew defective splices before printing, thus eliminating possible transport problems.

The electronic spiral miller accurately scrapes the film emulsion and simultaneously vacuums the entire resulting residue eliminating any "rain" effect on the film.

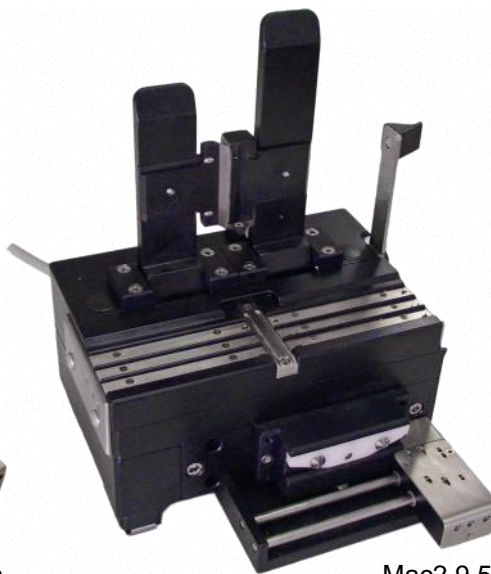
### New

- Warning monitor LED: new red led on the pressure plate to allow a quick check of the hot press in-temperature condition
- Hardened hot press and film support bar
- Self levelling press for better and stronger splices
- Simple mechanism for an easy tuning of the miller thickness action

*Available (on request) for 16mm, 9,5mm,8mm, Super8.*



Mac2 16mm



Mac2 9,5/8/Super8mm

# Special film-splicing-tapes

## SPC PRE-SPLICING ADHESIVE TAPES



ART. CODE	ADHESIVE TAPE SIZE
<b>SPC PRE-SPLICING ADHESIVE TAPES</b>	
NAS12A	25mmx20mt Tape Black/Pre
NAS16	19mmx66mt Tape Yellow/Pre
NAS9	38mmx10mt Tape Clear/Pre
NAS38	38mmx66mt Tape Yellow Pre
NAS12B	25mmx20mt Tape Yellow/Pre

## EDITING ADHESIVE TAPES



ART. CODE	ADHESIVE TAPE SIZE
<b>EDITING ADHESIVE TAPES</b>	
NAS10	8,5x10mt Tape Clear Edit
NAS11	13,8mmx10mt Tape Clear Edit
NAS13	12mmx10 Tape Clear Edit
NAS14	17mmx10mt Tape Clear Edit
NAS2	15mmx10mt Tape Clear Edit
NAS8	25mmx10mt Tape Clear Edit
NAS9B	38mmx10mt Tape Clear Edit
NAS9C	38mmx15mt Tape Clear/Neg. Edit

## ***Pre-splicers and Processing Control Equipment***

### ***Pre Splicers (for negative and positive before processing)***

- **M.3 35mm Darkroom Splicer** (Pre- Processing Splicer INC82/A)
- **M.3 16mm Darkroom Splicer** (Pre- Processing Splicer INC82/B)

### ***Quality Control and Handling Equipment***

- **Scratch Finder** (Stand alone Cat. PH116-A)
- **FSC FilmStroboChecker Digitally Evolved** (Cat. CINE4-D)
- **FSC FilmStroboChecker Accessories:**  
SF SOS Automatic Scratch Detector (Cat. PH116-B)
- **Autochecker 35 DLX** (Cat. CINE9)

### ***Infrared Viewing Equipment***

- **DSS42 Darkroom Surveillance System** (Cat. PH95-B)
- **OrangeLED Lamp** (Cat. PH102-F)

## M.3 35mm Darkroom Splicer

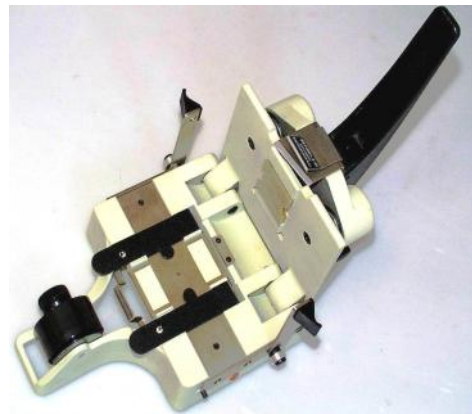
(Pre Processing Splicer INC82/A)

## M.3 16mm Darkroom Splicer

(Pre Processing Splicer INC82/B)

Easy to use in the dark, quick and safe, are worldwide used to splice and repair film before processing.

The wrap-around type splice is extremely resistant to the chemicals and is recommended for positive as well as negative **"demand drive"** type film processors.



- *Eliminates staples saving your squidges*
- *Strong and thin splice for safe passage through the processor*

**Special "Processing Resistant" adhesive tapes**



<b>SPC PRE-SPLICING ADHESIVE TAPES</b>	
NAS12A	25mmx20mt Tape Black/Pre
NAS16	19mmx66mt Tape Yellow/Pre
NAS9	38mmx10mt Tape Clear/Pre

# Scratch Finder (Stand alone Cat. PH116-A)

## ***Cine-Film Processing requires a fine anti-scratch supervision!***

- The SF Optical Unit (Cat. PH116-C) enhances with infrared vision onto the monitor screen any surface fault like scratches, dust, etc...
- The SF SOS Automatic Scratch Detector (Cat. PH116-B) identifies the scratch and shows it clear and enlarged onto the monitor screen emitting an acoustic alarm.
- The SF SOS Automatic Scratch Detector (Cat PH116-B) can be easily set to detect any scratch-type, even of few microns.
- The operator can immediately evaluate the entity of the scratch from the monitor screen and intervene to remove its cause.
- Easy to assemble on almost any type of cine-film processor, is perfectly suitable for B/W and colour, positive and negative film-processing.



SF Optical Unit  
(Cat. PH116-C)



SF SOS Automatic Scratch  
Detector  
(Cat. PH116-B)

**Worldwide used profitably by many top cine-processing laboratories (front end as well as release print labs). Scratch Finder ensures a high standard quality of processing reducing waste materials.**

### DIMENSIONS

- Length 350mm
- Width 360mm
- Height 70mm
- 5mt Standard Cable  
(between Optical and SOS units)

### SPECIFICATIONS

- Feeding power supply 220/110\* Volt
- Maximum power consumption 10/20\* Watt
- Environmental operating conditions :  
Temperature +/- 40°  
Humidity 90% without condense  
\* with optional step-up transformer

# FSC FilmStroboChecker Digitally Evolved

(Cat. CINE4-D)

- Easy to fit on any 35/16 cinema film processor (negative and positive), ensures non stop quality monitoring during all film processing phases.
- A perfectly clear vision is provided by a special led backlight-based video strobo system that visualizes, while processing, the total film surface, scene and perforations up to the border line without flickering at **any transport speed** through a 1032\*778 CCD sensor.
- Possibility to crop into the film details such as perforations, analog & digital sound tracks (Dolby-DTS-Sony) to better control the standard quality of processing.
- The **negative-film, black and white or colour, is displayed on the monitor in positive** with the possibility to control the colour (separate gamma and gain RGB), to better enhance otherwise invisible defects, including pressure marks typical of high sensitive film.
- The zooming capability allows observation in real time, during the processing operations, of little details "as through a lens", to quickly and easy find dust, blemishes, damage perforations, scratches or processing problems. The SF Analogue Optical Unit, made-up of a special CCIR and Infrared 950nm lighting source, enhances any surface fault during all processing phases.
- Also available *on option*, the SF SOS Automatic Scratch Detector (Cat PH 116-B) to identify and alert the operator with an acoustic alarm in case of a scratch.
- The sensor group containing the two CCD (colour and b/w), with their respective light sources, is ready to be easily fixed after the dryer of any processor.



**New**

"FSC FilmStroboChecker is an impressive quality checking system to guarantee a high quality standard level to the whole negative and positive processing line"

**Computer, Strobo and optional PH116B unit assembly**



**Sensor Group Plate**



The Optical Scratch Finder displays any scratch otherwise invisible...

**BW monitor**

## WHAT'S NEW ON "DIGITALLY EVOLVED"

The necessary shift of the FSC into the digital video environment, has brought some good advantages for an easy, flexible and more intuitive use of the equipment.

- FSC Digitally Evolved comes with a PC that substitutes the previous analogue video frame memory system and gives a better smoothness to the video flow.
- FSC Digitally Evolved come with an integrated gamma and gain separate RGB control for a more precise colour profiling on the different film masks.
- The new Strobo unit that equips the FSC Digitally Evolved gives a new frame centring control that allows an easier scene frame tuning with just "one push" of a button.



# FSC FilmStroboChecker Digitally Evolved

(Cat. CINE4-D) - OPTIONALS

## SF SOS Automatic Scratch Detector (Cat. PH116-B)

SF SOS Automatic Scratch Detector (Cat. PH116-B) connected to FSC FilmStroboChecker emits an acoustic signal for any identified scratch, showing it clearly on monitor screen during processing.

- Infrared emission at 950nm.
- Video-Analog output.
- Adjustable sensitivity.



# Autochecker 35 DLX (Cat. CINE9)



The new Autochecker CINE 35 DLX has been specifically designed to satisfy the requirements of the Top of the Front End Labs for maximum automation and quality control in order to ensure always the maximum level in negative processing.

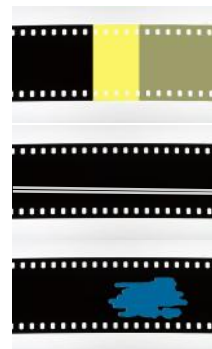
This advanced technology device automatically identifies and stops immediately any fault or physical condition of the film potentially unsafe for a correct development.

Autochecker remarks with a beep border tears, broken perforations, overturned emulsion and any other of the film damages:



Cuts of any dimension:  
 - from the edges between perforations  
 - from the edge to the perforation  
 - between perforations (scena area)

Damaged perforations:  
 the operator decides after how many broken perforations stop the film



Updown emulsion

Scratches-abrasions-folds  
 (on request and only on scena area)

Blemishes, staples, adhesive tapes or any physical damage on scena area.

Once found and stopped the fault is positioned exactly over the splicer matrix for quick and easy film mending



- **secure film-loading system**
- **easy darkroom operations**
- **200 feet/min checking-speed**
- **CPU controlled tension**
- **up to 2000 feet capacity spool**
- **film-splicing unit M3 35 DRK**
- **film-mending unit M3 352FR.**



**AVAILABLE FOR 16mm format**

## **DSS42 Darkroom Surveillance System** (Cat. PH95-B)

The 950nm infrared illumination (absolutely safe for any emulsion) and the special infrared sensitive CCD camera provide a complete and careful control of the darkroom.

A wide range of easily interchangeable micro-optics of any desired shot angle provides a detailed and crisp image of the darkroom interior.



***Available 3 models with different infrared light powers for all necessities:***

**Infrared Lamp 21** (Cat. PH102-C)

**Infrared Lamp 42** (Cat. PH102-D)

**Infrared Lamp 126** (Cat. PH102-D)

## **OrangeLED Lamp** (Cat. PH102-F)

The OrangeLED lamp are absolutely reliable and ensure a strong and homogeneous illumination in total safety for positive printing operations. The adopted LED technology together the special sealed construction, makes the orange lamp ideal for a darkroom illumination use.



## ***Quality Inspection Tables and Special Rewinders For Negative & Positive Film***

### ***Quality Inspection Tables***

- **D-Observer Table** (Cat. CINE3) (entry level model)
- **D-Observer FSC Digitally Evolved Version** (Cat. CINE7-D)
- **D-Observer FSC and HDT Accessories:**
  - SF Optical Unit (Cat. PH116-C)
  - SF SOS Automatic Scratch Detector (Cat. PH166-B)
  - Microscope film vision system (CAT.CINE6-3)
- **EZ Archive Report Software Package** (CINE SW)
- **D-Observer FSC 70mm IMAX 15 Perf.** (Cat. CINE11)
- **D-Archiver HD2k** (Cat. CINE10-A)
- **D-Archiver HD Analogue** (Cat. CINE10)

### ***Film-Winders***

- **CIR Maxi Winder 6000 Feet** (Cat. CINE2-B)
- **Film Rewinder-Cleaner** (Cat. CINE5)
- **Rewinding Table 16/35mm:**
  - (CINE6) **Unidirectional Motorized/Manual** film transport
  - (CINE6-B) **Bidirectional Manual** film transport
  - (CINE6-C) **Bidirectional Motorized/Manual** film transport

## D-Observer Table (Cat. CINE3)

D-Observer has been specifically designed for film laboratories, film archives and in general film companies which need to check the total quality of the film in all its parts.

**The standard model perfectly runs for film 35mm and 16mm positive and negative film.**

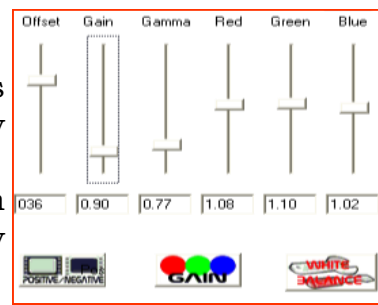
**D-Observer can be easily upgraded to handle archive film like 9,5 Pathé, 8mm and Super 8 maintaining, for these formats, the same performances.**

- Its adjustable-pitch sprocket, safeguards any standard and short pitched perforations, up to the most retired ones from the archive.
- In any case the film is always automatically pre-tensioned before starting and its integrated technology protects the film from any tension damage.
- A checking-speed selector grants three adjustable constant speeds for each direction.
- The standard setting (12FPS-24FPS-150FPS) can be easily changed by the operator directly from the setting menu on the keyboard.
- An easy and ergonomic control knob enables the operator to run the film in either direction with variable speed from 0 up to 200 FPS maintaining always the same tension during all the operations.
- The CPU controlled transport allows the operator to choose the right and preset film transport behaviour with a button press only: smooth and progressive for negative film, prompt and fast for positive (8 different pre-set modes are available).
- The digital counter measures in real time the film length in feet, frames, meters, fps and elapsed time at 24 or 25 fps and the operator can locate a certain frame simply digits its foot and frame reference on the keyboard.
- The large inspection area and the incorporated viewer allow an easy film handling and comfortable space for all needed tools.
- A wide choice of accessories increases the use of this very versatile equipment (see “D-Observer Accessories”).

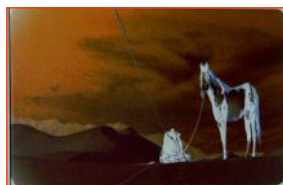
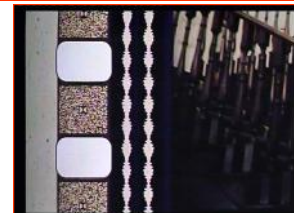


## D-Observer FSC Digitally Evolved Version (Cat. CINE7-D)

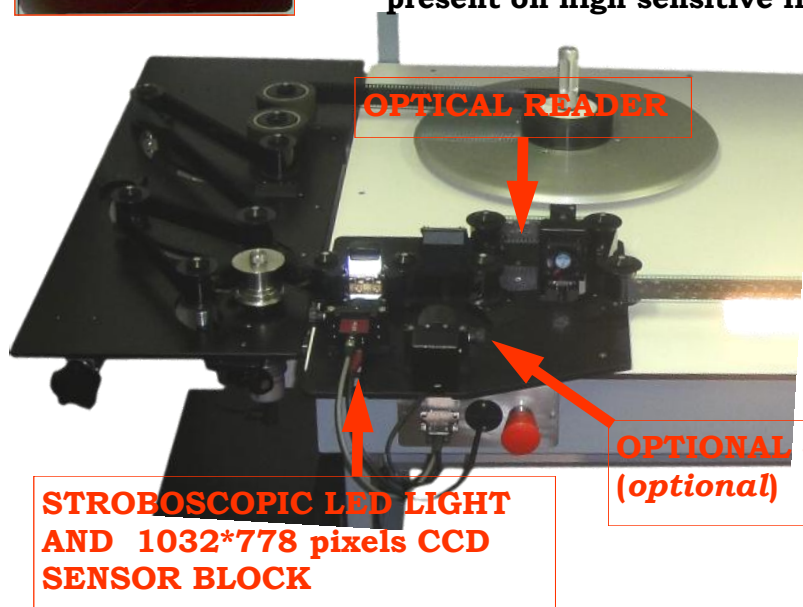
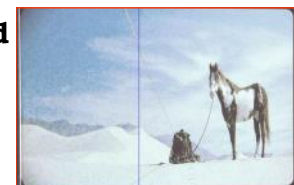
- All the features of the D-Observer Table (Cat. CINE3) are included in this version, additionally equipped with a PC based video stroboscopic system for increasing its performances and in order to use it like a "moviola" for both 35/16mm positive and negative film.
- The digital video stroboscopic system allows the operator to see the image without flickering at any speed, to enlarge and freeze details in real time during the checking on the monitor screen.
- The development and accuracy of analogue and digital sound tracks, the steadiness of the printed image, the quality of the scene area and the perforations integrity, can be easily and accurately visually checked.
- The software integrated separate gamma and gain control gives a precise colour profiling capability for perfect matching the different film masks.



**The versatile moviola for film inspection with digital performances for any cine post-production necessity**

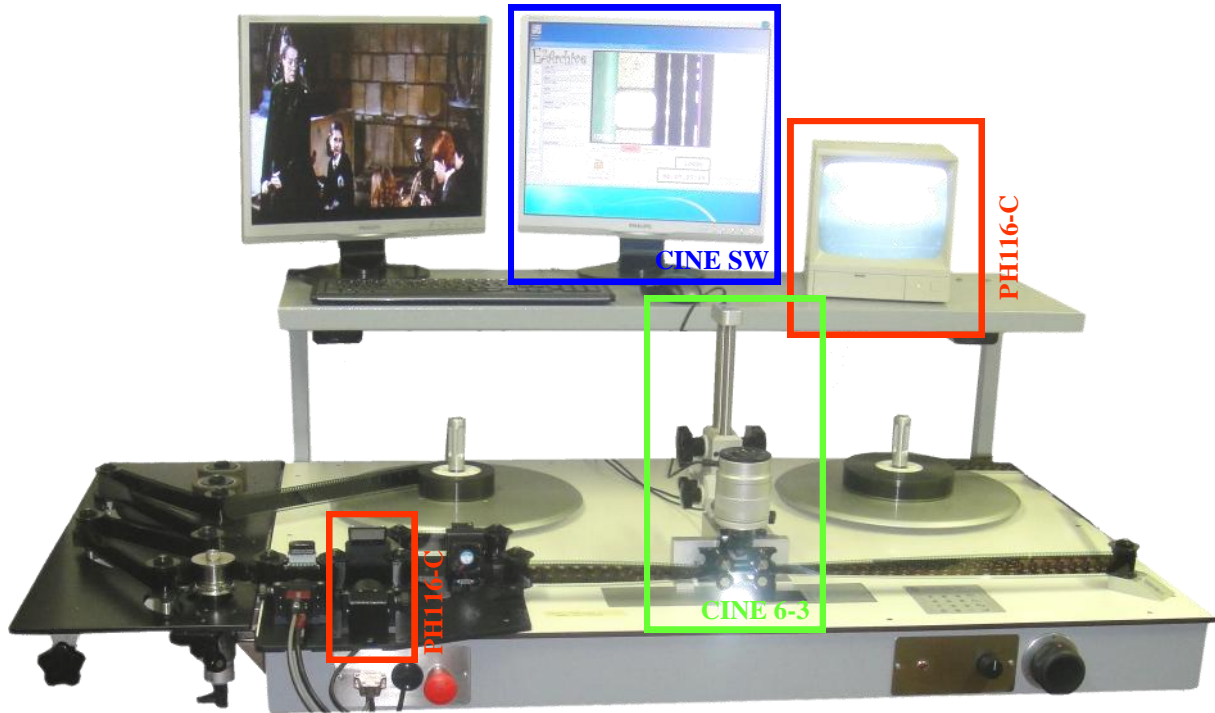


**Example of negative (on the left) inverted (on the right) with a special colour enhancement in order to see any "pressure mark" present on high sensitive film.**



The analog optical reader 16/35mm reproduces the sound track in sync with the image showed on the monitor.

## D-Observer FSC Digitally Evolved Version Accessories



The well made solid mechanic and electronic construction of the D-Observer Digital Table does not require any periodic maintenance and consumables.

A wide choice of accessories increases the use of this very versatile equipment.

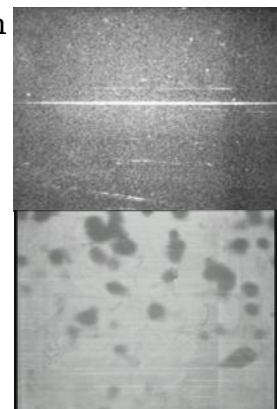
### **SF Scratch Finder Optical Unit** (Cat. PH116-C)

The **SF Optical Unit (Cat. PH116-C)** is a special CCIR camera with an 950nm infrared light that enhances any film surface fault showing it clearly on the monitor screen during processing.

With the optional SF Optical Unit (Cat. PH116-C) scratches of any size, snow dots and any kind of fault small blemishes (acetic syndrome included) are immediately enhanced to be easily **visually** detected and restored on both positive and negative film. The infrared light illuminates the selected frame eliminating the printed latent image for a more accurate inspection and an easier restoration.



**Examples of scratch and vinegar syndrome as normally appear on the monitor screen (image on the left) and after the infrared vision enhancement through the optional SF optical unit (image on the right).**



## EZ Archive Report Software Package (CINE SW)

EZ ARCHIVE is a special optional software that can be used in conjunction with the D-Observer FSC Digitally evolved version.

Its main purpose is the editing of a report during the film analysis phase.

Its simple interface gives to the operator the

possibility to describe quickly and easily any encountered defect in order to get a final report as quick reference of the film state.

The video acquisition integrated module will help in adding more value to the analysis made on the film roll allowing the operator to store digitally an image (video screen shot) of any encountered problem.

The final result will be a database containing all analysed films with their defects described frame by frame with the additional screenshot as visual reference of the frame and defect position.

The database will be accessible through intranet or internet and the resulting acquired report will be like the one shown here.



titolo: *Il signor rampollo*

la scheda de " *Il signor rampollo* " contiene 64 eventi

frame	timecode	tipo difetto	testo_report	immagine
1097	00:00:43:22	traballio	decidere se correggere	<p>traballio leggero</p> <p>00:00:43:22</p>
2323	00:01:32:23	macchie	poco visibile	<p>riga</p> <p>00:01:32:22</p>
3302	00:02:12:02	flicker	flicker (tutta la scena)	<p>flicker (tutta la scena)</p> <p>00:02:12:02</p>

## Microscope film vision system (CAT.CINE6-3)

This special accessory magnifies onto a monitor screen the operative area maintaining both hands **free** for easy use.

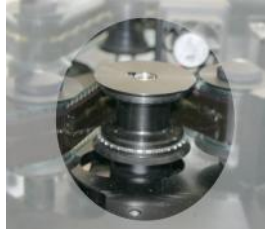
The system is equipped with two different light sources (visible white light and IR 950nm light) useable separately or in combination so to hide defects (only visible light), enhance dramatically the physical surface defects (IR only) or get a defects perspective with a reference on the frame image (visible and IR).



## Adapter for handling special film-formats

D-Observer can be easily upgraded to handle other archive or special formats:

- 28mm
- 9.5 Pathé
- 8 mm
- Super 8



The upgrading Kit for each format includes the special sprocket and the under-plate spacer. The reels are universal format type and the standard electronic counter/display can be fitted for all these formats.

**The widest choice of cinema splicers is available for all LABS-CINEMA-ARCHIVE formats and uses.**  
**(Please consult our catalogue under "Film splicers")**

## **D-Observer FSC 70mm IMAX Version 15perf.** (Cat. CINE11)

The DObserver FSC 70mm version is a special recently introduced version especially developed for the 70mm 15perf IMAX format prints and negative control.



It comes equipped with a full HD Kodak CCD digital sensor that, with all the colour matching tools of the DObserver digitally evolved version, shows through a PC Windows based video buffering system the film perfectly steady up to 30 fps on a large 42" lcd monitor.

Thanks to the IR system that equips (standard on the D-Observer 70mm IMAX version), it is easy to quality control the film surface while the film is running.

## **D-Archiver HD2K** (CAT. CINE10-A)

(Film Inspection/Restoring table, Telecine on file and Scanner HD up to 2K from 16/35)

**The bridge connecting Analog and Digital for Film-Restoration**



All in One Solution for Film Archival

- Film Inspection Table
- Film Restoring Table
- Moviola & Splicing Table
- Scanning with variable resolutions up to 2K

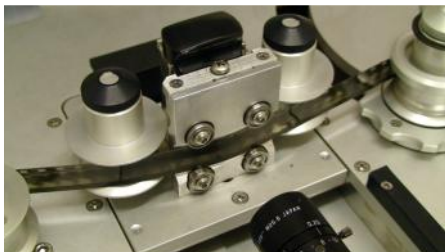


Suitable for all 35mm and 16mm film formats, upgradable for 9,5 Pathè, 8mm and Super8.

The new complete “Minilab” for the Restoration and Archival Process developed for any old, shrunken, brittle or warped film.



Smooth, gentle and precise transport (digitally driven, not pin registered) for a perfect passage and steadiness even with very old, damaged brittle and shrunken film.



Captures 7,5 fps (16BIT) at 2K resolution in RAW format, 25 fps at HD resolution 1920x1080 (increases speed while decreasing resolution). Exclusive combination of a special dry gate, a constantly controlled tension and a high focal depth to centre focus even with extremely warped film.

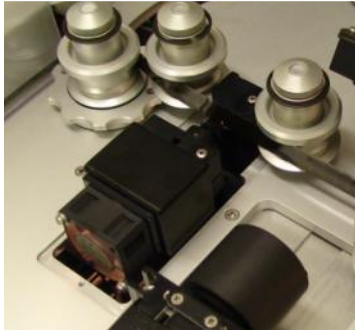


The Infrared Scratch Detector enhances scratches and defects on the film surface showing it clearly on the monitor screen.



A PTR set cleans the film before the acquisition and the diffused Led-Light ensures an optical concealment of any remaining dust, debris, lint and scratches.

These innovative solutions give the advantage of a cleaning treatment of the film close to wet printing without the chemicals.



The special optical reader allows an excellent reproduction of sound even from film in very poor condition.

**DArchiver HD2K TECHNICAL SPECIFICATIONS:**

Film Format: 16mm and 35mm B/W and Color (8mm, Super8 and 9,5 Pathé on option)  
 Imaging Device: 1/2" CCD  
 Illumination: Ultrabright LED Array  
 Transport: Brushless PLC driver motors  
 Registration Pitch: adjustable control on sprocket for film shrinkage  
 Resolution: up to 2K (2048x2048) variable and freely adaptable lower resolutions  
 Bit depth: 16 BIT  
 Frame Rate: 7,5 FPS at full resolution (16 BIT) Higher Speed at smaller resolutions  
 Data Formats: RAW, DPX, Tiff

**D-Archiver HD ANALOGUE (CAT. CINE10)**

The D-Archiver HD ANALOGUE version is part of the D-Archiver equipment family. It is more focussed into the pure quality checking environment. The 16/35 film handling equipment is equal to the digital version but is equipped, in this version, with an HD analogue camera that, without any computer equipment, gives a full HD film vision on a 24 inches LCD display. A software is, anyway, provided for helping the operator in freely customise the camera colour profiling for perfectly matching any film mask change eventually required.

**DArchiver HD ANALOGUE TECHNICAL SPECIFICATIONS:**

Film Format: 16mm and 35mm B/W and Color  
 Imaging Device: 2/3" CMOS 1920\*1080 16:9 sensor  
 Illumination: Ultrabright LED Array  
 Transport: Brushless PLC driver motors  
 Registration Pitch: adjustable control on sprocket for film shrinkage  
 Resolution: 1100 TV lines  
 Bit depth: 12 BIT  
 Frame Rate: up to 40 fps  
 Output Signals: HDSDI interlaced, SDI, CVBS, analog RGB/HV progressive or Y/B-Y/R-Y interlaced  
 Dual Link progressive HDSDI

<b>35mm Film Formats:</b>	<b>16mm Film Formats:</b>
35mm B/W Negative Film	16mm B/W Negative Film
35mm B/W Reversible Film	16mm B/W Reversible Film
35mm B/W Print Film	16mm B/W Print Film
35mm Color Negative	16mm Color Negative
35mm Color Reversible Film	16mm Color Reversible Film
35mm Print Film	16mm Print Film
FA 35mm all formats	S16mm all formats
35mm 2,3,4 perf. Operation	16mm comopt (composit optical print) sound
35mm Academy 4perf. With comopt (composit optical print) sound	
35mm comopt (composit optical print) sound	

## CIR Maxi-Winder 6000 Feet

(High Speed Film Rewinder Cat. CINE2-B)



The Maxi-Winder has been developed for darkroom-operation to splice and assemble raw stock ends up to 1800 meter reels (6000 feet) to minimize the loss of material.

The Maxi-Winder automatically and quickly rewinds up to 6000 feet film maintaining always a constant tension.

**In few seconds a perfectly tight batch of up to 6000 feet!**



- Three working modalities:
  1. *Simple winder* (up to 6000ft from left to right). **-WINDING-**
  2. *Division* (up to 6000ft from left for winding a pre-selectable length on right plate. **-ROLLS BREAKING DOWN-**
  3. *Addition* (up to 6000ft of rolls spliced together on the right plate from the left one) **-RAW STOCK-**
- Two brushless motors, PLC controlled, ensure always the same film-tension.
- The general tension can be easily adjusted with a manual regulator.
- The obtained batch is always perfectly tight.
- A practical shelf between the 2 plates contains in ergonomic position the ultrasonic adhesive tape film-splicer.

## **Film Rewinder-Cleaner** (Cat. CINE5)



**Cleans and winds up perfectly  
tight your film in one only**

- Automatically rewinds and cleans up to 2000 feet of negative or positive 16/35 film as much quickly as its safety requires
- The winding speed, settable for each different film format is totally safe for old and archive film
- The two CPU controlled motors wind smoothly the film ensuring always perfectly tight batches
- During the wind-up operations the four PTR in line clean softly both film surfaces from dust and dirtiness
- Loading-unloading operations are simple and quick; the PTR rollers are easily removable, to be washed when needed
- On option the digital counter (feet/frames-meters-total frames-time code).



- Scratch Finder is available on option as Optical Version (Cat.116-C) to enhance through an infrared CCTV system any scratch or fault on both film surfaces or as Stand Alone Version (Cat.116-A) to detect and stop them automatically.

# Rewinding Table 35/16mm

**CINE6 Unidirectional Motorized/Manual** film transport

**CINE6-B Bidirectional Manual** film transport

**CINE6-C Bidirectional Motorized/Manual** film transport

*Designed in collaboration with the specialists of Istituto Luce and Cinecittà labs in order to improve the important phases of film-restoration. Is a variable and gradual speed film transport, ideal for old archive film.*



**Image shows full option system**

## **Features:**

- 900 mt standard plates (different measures on request).
- Central diaphanoscope - Glove box - Film spool shelves.
- 12V low tension - Emergency stop device.

## **Accessories available on option:**

**Universal Digital Counter (CAT.CINE6-1)** This accessory, composed by a special sprocket for 16/35mm film “retired film” compatible, gives in real time the total frames and footage counted position of the film.

**White LED lamp with adjustable clutch arm and magnifying lens (CAT.CINE6-2)**

Special halogen lamp useful in lighting the table surface. Its clutched arm is freely adjustable for the most comfortable use. It is equipped with 64 white LED and a 5 dioptries (2.5 enlargements).

**Microscope Film Vision System (Cat.CINE6-3)** This special accessory enlarges onto the monitor screen the operative area maintaining free both hands for an easy use. A special IR camera enhances the fault on the film surface otherwise roughly invisible.

**Strobe Unit (CAT.CINE6-4)** This accessory gives a perfectly clear vision of the whole frame area independently from the transport speed. It is composed by a special horizontal side plate with a mounted digital CCD camera (1032\*778 pixels), a LED white stroboscopic light and a special video processing unit (Windows based PC and 19” monitor) that ensures, thanks to its “retired film” ready 16/35mm sprocket wheel, the perfect timing for showing the film on the monitor.

**Cir srl**

**Strada Prov.le per Tolfa km 0,700**

**00050 Santa Severa (Roma-Italy)**

**Tel +39/0766-570008 Fax +39/0766-571390**